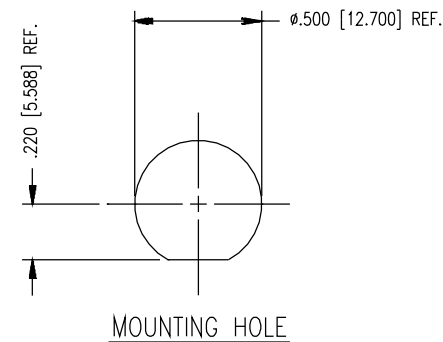


#### NOTES:

1. MATERIALS:  
INSULATOR: POLYETHYLENE PER ASTM D4976  
LOCKWASHER: PHOSPHOR BRONZE, ASTM B103  
ALL OTHER METAL PARTS: BRASS, ASTM B16
2. FINISHES:  
CENTER CONTACT: GOLD PLATE PER ASTM-B488  
C-RING: SILVER PLATE PER ASTM-B700  
ALL OTHER METAL PARTS: NICKEL PLATE PER AMS-QQ-N-290
3. ELECTRICAL CHARACTERISTICS:  
NOMINAL IMPEDANCE: NON-CONSTANT  
VOLTAGE RATING: 10,000 VDC
4. DIMENSIONS ARE IN INCHES [MM]



REVISIONS	
ISSUE	CHANGES
5	CN 39738 C REDRAWN HVN 12/18/06
G	UPDATED TO DMF304 NOTE 1 WAS TEFLON NOTE 2 WAS TARNISH ER051500 KPL 01/21/14
CUSTOMER SALES DRAWING	
THIS DRAWING, THE DESIGNS AND IDEAS EMBODIED IN THE DEVICE TO WHICH IT RELATES, AND THE METHOD OF PRODUCING THE DEVICE, ARE THE PROPERTY OF WINCHESTER ELECTRONICS CORPORATION AND SHALL NOT BE EMPLOYED, COPIED, OR DISCLOSED TO ANYONE, IN ANY MANNER WITHOUT THE CONSENT OF WINCHESTER ELECTRONICS CORPORATION.	
SCALE 2:1	
APPROX SURFACE AREA	AREA
USED ON	
REF:	
10 KV BULKHEAD RECEPTACLE	
DRAWN H.NGUYEN	DATE 12/18/06
DESIGN AT	DATE 06/22/67
APPR.	DATE
1064-1 QD	